



SmartAsset Software

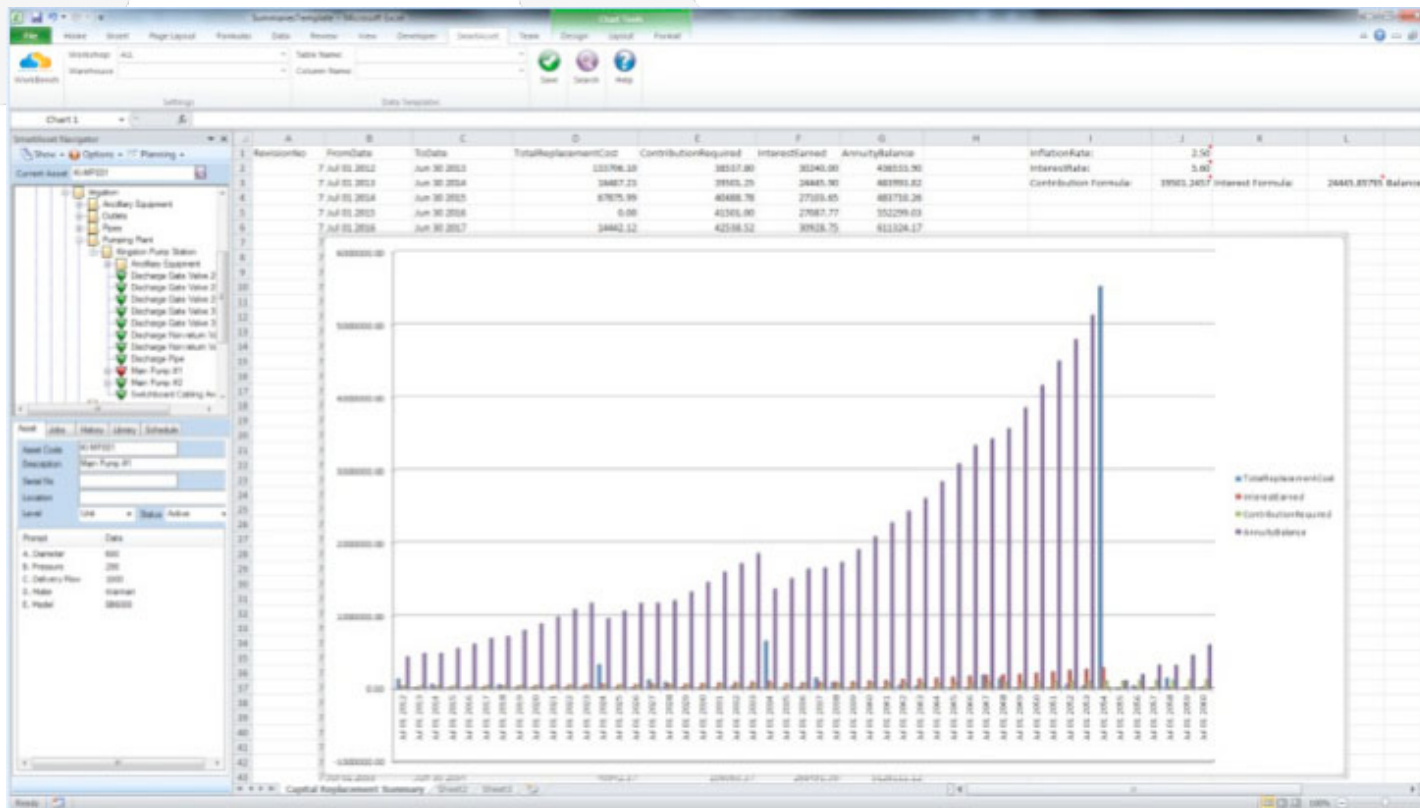
# Smart Asset Software

Microsoft Excel Integration

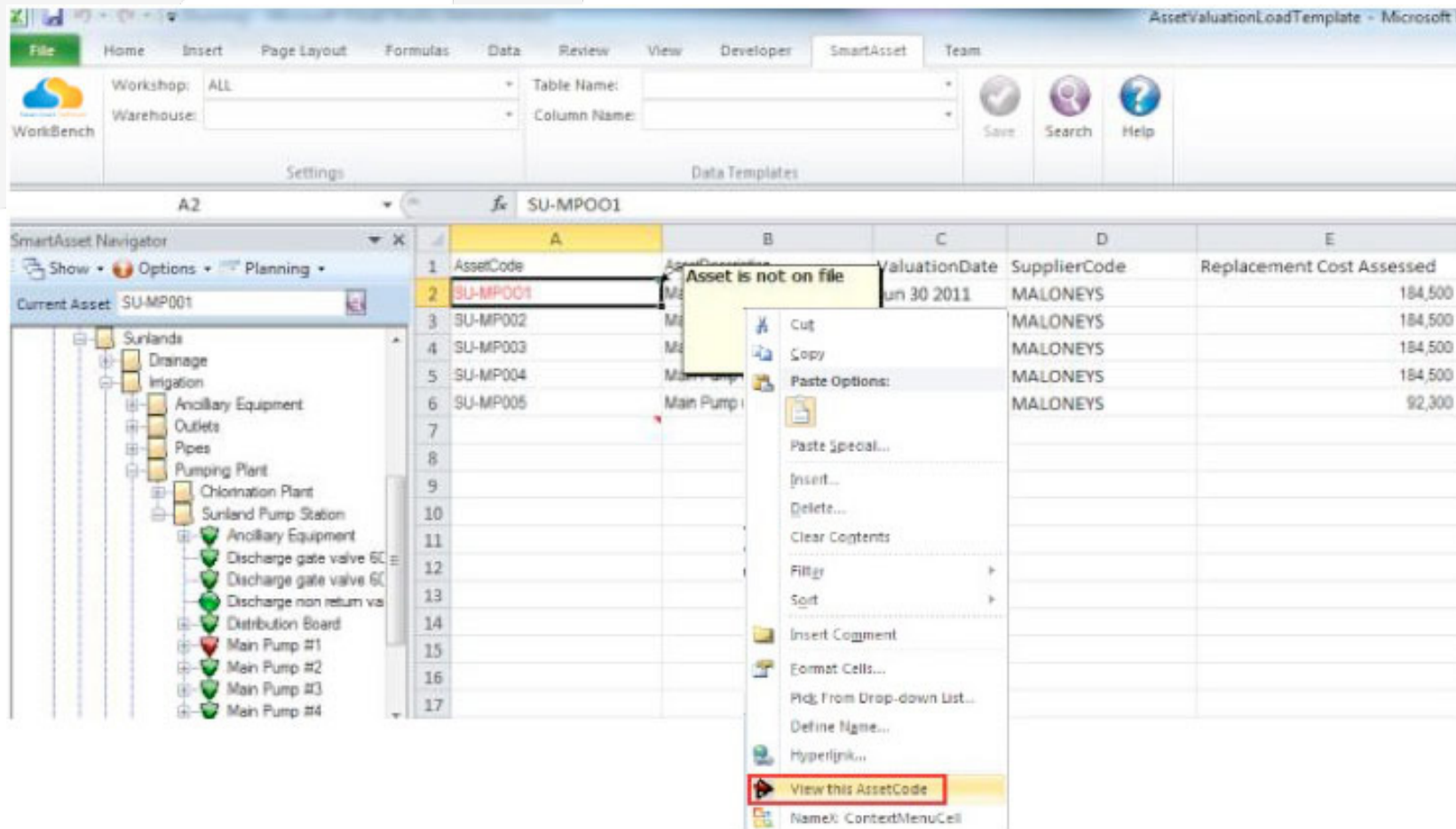
# Kick a Goal with SmartAsset & Excel

The **SmartAsset Excel Addin** harnesses the power and capability of Excel when used for asset management data preparation, manipulation and presentation with the security and safety of a commercially accepted

asset management software product that ensures consistent data integrity and industry standards for database storage and recovery.



By **embedding** asset management functionality inside Excel, the process of uploading asset data including field- assessed valuations utilises SmartAsset business rules including data validation and facilitates easy access to database content via simple context menu options that launch standard SmartAsset forms.



**Capital Replacement Planning** data can be extracted from the SmartAsset database and manipulated with Excel tools such as goal seek in order to assist with the more complex financial aspects.

	A	B	C	D	E	F	G
1	RevisionNo	FromDate	ToDate	TotalReplacementCost	ContributionRequired	InterestEarned	AnnuityBalance
2	5	Jul 01 2011	Jun 30 2012	130702.50	16250.00	8750.00	244297.50
3	5	Jul 01 2012	Jun 30 2013	0.00	16770.00	6107.44	267174.94
4	5	Jul 01 2013	Jun 30 2014	1572		6679.37	275435.29
5	5	Jul 01 2014	Jun 30 2015	6474		6885.88	235440.88
6	5	Jul 01 2015	Jun 30 2016			5886.02	259758.89
7	5	Jul 01 2016	Jun 30 2017	1334		6493.97	271927.16
8	5	Jul 01 2017	Jun 30 2018			6798.18	298355.85
9	5	Jul 01 2018	Jun 30 2019	5096		7458.90	275107.16
10	5	Jul 01 2019	Jun 30 2020			6877.68	302891.81
11	5	Jul 01 2020	Jun 30 2021	331		7572.30	328729.49

**Goal Seek**

Set cell:

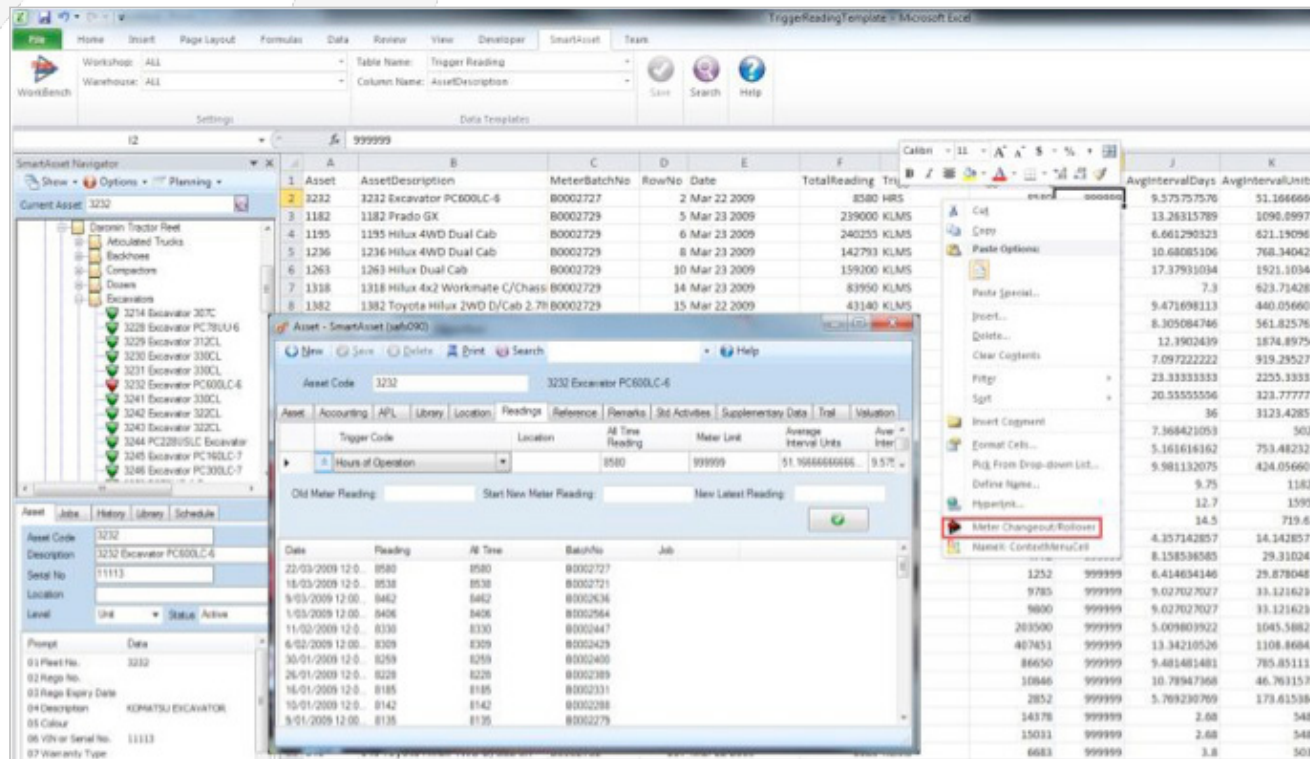
To value:

By changing cell:

OK Cancel

**Meter Readings** used to monitor equipment usage and trigger preventative maintenance can be collected from external sources such as fuel card systems and uploaded into SmartAsset with a minimum of fuss

and in the knowledge that the resultant data has been refined and validated including access to the meter rollover/changeout functionality of SmartAsset



Selecting the 'Save' button housed in the convenient **SmartAsset Ribbon Tab** records the fruits of your data preparation and manipulation efforts back in the secure, shared and backed-up data repository that is the SmartAsset **SQL Server database**... or perhaps that of your own **CMMS/EAM** product.